



KONICA MINOLTA

The essentials of imaging



bizhub C650

Central reproduction department

Office system bizhub C650



Combining b/w with colour, speed and quality

With the bizhub C650 Konica Minolta has introduced a high-speed colour multifunctional that perfectly combines the capabilities most sought after in CRDs and central high-volume locations in corporate and office environments. Its state-of-the-art technology forms the basis for flexible and comprehensive reproduction capabilities, a superior image quality and absolute reliability.

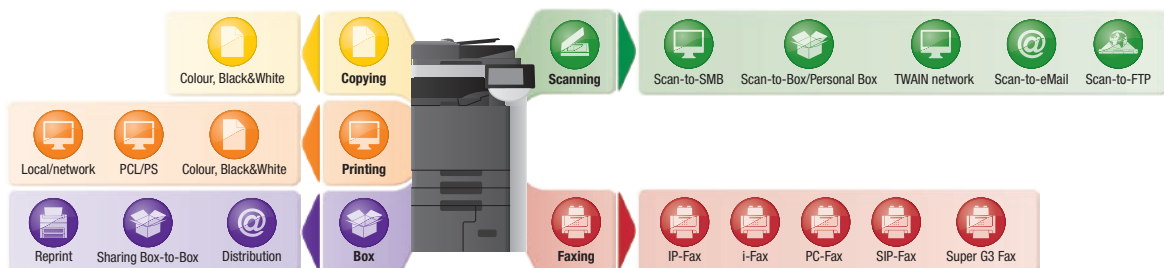
- With an impressive speed of 50 colour and 65 b/w pages per minute the bizhub C650 promises speedy colour production as well as productive b/w printing and is perfectly suited for high-volume printing and copying anywhere.
- Whether it enhances existing production facilities or takes the place of outdated b/w devices, the bizhub C650 offers highly productive yet affordable black & white printing and copying. Its outstanding b/w quality is due to the fact that in the bizhub C650 Konica Minolta's advanced colour imaging technology is also applied to b/w reproduction.
- The standard Emperon™ controller on the bizhub C650 provides full network compatibility and ensures the system's seamless integration into any IT infrastructure, making available an

array of advanced communication technologies that are conveniently accessed via the company network.

- Administrators will appreciate the range of PageScope applications that come standard with the bizhub C650. The complex task of monitoring and managing this and other bizhub devices on the network is greatly simplified with these helpful utilities.
- The important issue of security is also taken care of: a comprehensive security functionality is standard on Konica Minolta's bizhub devices; and the bizhub C650 is of course certified to ISO 15408 EAL3.

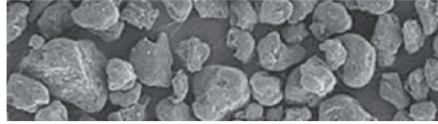
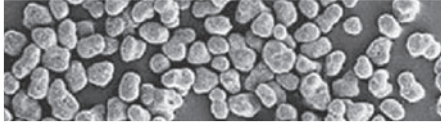
Highly powered working environments need look no further – combining productive colour and superior quality with high-speed b/w printing the bizhub C650 provides the pace and flexibility so essential to these locations.

→ Workflow options



Simitri HD® polymerised toner

Conventional toner



Advanced technology at the core

Designing the bizhub C650 Konica Minolta put the focus on innovative technology – technology to improve performance, productivity and reliability; technology to make colour more accessible while b/w printing is still truly affordable. In the bizhub C650 it's the clever details that make all the difference, such as the possibility to continue printing in black & white even when the colour consumables are depleted. Its combination of technological innovations makes the bizhub C650 the perfect colour device to replace outdated and unproductive b/w equipment now.

→ Powerful Emperon™ controller

Konica Minolta's proprietary Emperon™ controller technology is at the core of the bizhub C650's overall system architecture and ensures the system's seamless integration into virtually any network environment. The Emperon™ print controller provides serious performance power and – with both PCL 6c and PostScript 3 standard, as well as Windows, Mac, UNIX, Linux and Citrix support – is compatible with any infrastructure.

- Fast and easy setting even of complex print jobs thanks to unified drivers with intuitive GUIs
- Support of ICC profiles to streamline colour reproduction and provide high-precision colour output
- No dedicated hardware, separate hard disc or additional RAM required – Emperon™ shares the bizhub resources.

→ Simitri® HD polymerised toner

With tiny, uniformly shaped toner particles Konica Minolta's proprietary Simitri® HD toner achieves an outstanding image quality. The benefits for b/w as well as colour documents are obvious: Razor-sharp text and finest lines for drawings and illustrations; a highly durable print finish; smooth photo reproduction, and an unparalleled colour fade resistance ensure longer-lasting prints of better quality than ever.

→ Induction heating fusing

With this state-of-the-art fusing technology Konica Minolta has introduced a true innovation. Its instantaneous heat enables fusing at lower, yet stable temperatures. Despite maintaining the fusing accuracy to ensure the excellent image quality, this considerably enhances the media flexibility on the bizhub C650. At the same time induction heating fusing minimises energy consumption while maximising energy efficiency.

→ Complete productivity

A range of innovative features provides the impressive overall productivity in the bizhub C650:

- An advanced dual-beam laser unit to enhance the production speed and ensure highest precision.
- By combining rip-once-print-many and rip-while-print technologies, the multi-job feature supports continuous production for even the most extensive print runs.
- Automatic duplexing is standard and includes the processing of 256 gsm paper and A3+ paper size. Unique in its class, the bizhub C650 provides 100% duplex productivity for the fast completion of double-sided jobs in colour and b/w.





Versatile & streamlined production capabilities

Devices in central locations need to deliver – whether that's in a CRD or in a busy departmental setting with high-volume requirements. The bizhub C650's unfailing performance combines productivity in colour and b/w with absolute reliability and flexible multi-tasking capabilities that ensure the streamlined processing of simultaneous jobs – fax and scan, scan and print, print and save to box or any other combination.

➔ Unique box functionality

An elaborate box feature on the bizhub C650's internal hard disc enhances the information flow. Konica Minolta's User Box approach much facilitates the storing, archiving and sharing of scanned, printed, copied and faxed documents for reprinting and repeated sending.

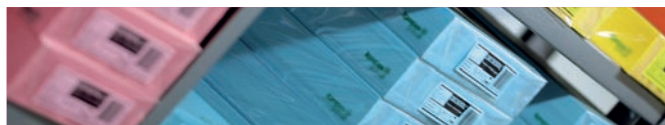
- Flexible data management in max. 1,000 boxes for up to 3,000 documents or 10,000 pages
- User boxes can be protected by password or user authentication and individually defined as personal, public or for groups
- PageScope Web Connection provides easy access and editing of documents stored in user boxes via straightforward browser interface

➔ Comprehensive scanning

As an integral part of today's communication in the office, scanning streamlines the distribution and sharing of information. Via the bizhub C650's integrated document feeder multi-page documents are scanned in one shot and automatically converted to multi-page PDFs in next to no time. Even more efficient is Konica Minolta's unique ultra-compact PDF feature, as it reduces e.g. data-rich colour documents to a more manageable size.

- Simultaneous faxing and eMailing of documents to multiple destinations and parallel archiving of data in user boxes, on SMB or FTP
- Scan-to-eMail, -FTP, -SMB and -box, plus TWAIN scan
- High-speed scanning of up to 75 originals per minute
- Choice of scan formats includes multi-page PDF, JPG and TIFF





→ High-speed, high-quality printing

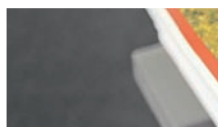
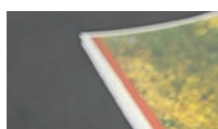
The bizhub C650's advanced print functionality focuses on the fully automatic production of the most diverse documents. Special printing functions offer users enhanced creativity and flexibility to produce an extensive variety of materials. And versatile finishing options round off the bizhub C650's comprehensive capabilities.

- Automated production of leaflets, brochures, mailings and more with features like overlay, mixplex, mixmedia, cover & inter sheet, chapter and poster mode
- Individual per-page settings allow combining mixed media in one job, using e.g. the company letterhead
- One-shot production of folded and centre-stapled booklets of up to 80 pages with optional booklet finisher
- Finishing also includes automatic stapling, punching – perfect for manuals, reports and extensive documentation
- Letter-folding mode provides time-saving, fully automatic folding of invoices, mailings and other letters for immediate dispatch

→ Impressive media flexibility

The bizhub C650 features versatile paper handling capabilities, and with its generous paper supply is suitably equipped for continuous high-volume printing.

- Processing of paper sizes A6 to A3+ and thick paper of up to 256 gsm (300 gsm from multi-bypass tray)
- The standard paper capacity of 3,650 sheets can be upgraded with an optional 3,000-sheet paper deck to impressive 6,650 sheets
- Max. 6 paper sources mean that up to 6 different types of media can be combined in one job
- Paper and toner refill on-the-fly keep stand-stills to a minimum
- Auto paper rotation and auto-tray switch facilitate continuous processing of print jobs



→ Finishing options



corner stapling



2-point stapling



two-hole punching



four-hole punching



duplex



combined mixplex/mixmedia



sheet insertion, report



letter fold



booklet



offset sorting

bizhub C650, office system



All-round support of the bigger picture

Clever design and advanced operation capabilities on the bizhub C650 make operating it a breeze! In addition, the bizhub C650 supports administrators with a range of standard PageScope applications to access, manage and control this and other devices on the company network.

➔ PageScope Account Manager

This convenient accounting software is the ideal central administration tool for all bizhub devices in the network. Its web-based interface offers easy access to the server software from anywhere in the network, providing the administrator with one unified platform for all accounting tasks. With features like central counter collection and analysis, defining and managing access limitations and print volume limits per user, plus many more, the Account Manager enables complete cost control related to document in- and output from copying, printing, scanning and faxing.

➔ PageScope Netcare

Satisfying important administrator demands, this utility provides fast access to and simple monitoring of individual or all devices on the network. Automatic eMail notifications can be activated to alert users to the status of each device, calling for immediate attention to any problem and maximizing the uptime of all monitored equipment. PS Netcare minimizes administrator intervention and much improves the overall productivity of all devices in the network.

➔ PageScope Data Administrator

The PageScope Data Administrator is synonymous with comprehensive account and data management: eMail addresses need not be entered one by one but can be downloaded in bulk e.g. from an LDAP-compliant eMail server. Individually programmed authentication and account data can include limited access rights to specific functions such as colour printing, helping to cut costs and control output volumes. All programmed data can be conveniently shared among different bizhub devices.





→ PageScope Box Operator

Offering flexible box allocation and access to the bizhub C650's user boxes from the desktop PC, PageScope Box Operator is a convenient application to facilitate the management of Konica Minolta's comprehensive box functionality. Accessed via an interface that's embedded in the Windows Explorer, the PS Box Operator allows to create, edit and delete user boxes. Private boxes can be password-protected; and thumbnails make the viewing and opening of stored documents quick and straight-forward. The PS Box Operator is an attractive enhancement to the bizhub user box functionality, making for faster and more efficient handling and full transparency of all user boxes.

→ Important security features

The bizhub C650 is certified to ISO 15408 EAL3 and offers comprehensive security functionality. Features include secure printing – enabling the production of a print job only after the relevant password is entered via the bizhub C650's operation panel – e.g. SSL-encrypted communication and hard disk encryption. Authentication limits access to the bizhub C650 to authorised users. With finger vein authentication the comprehensive authentication functionality includes a revolutionary biometric authentication option. Authentication by non-contact IC card is also available.

→ IPv6 internet protocol & IPsec

Supporting the IPv6 protocol as well as extended IPsec security functionality, the bizhub C650 offers latest IT technology.

→ CS Remote Care remote diagnostic system

Providing pro-active and highly flexible service support, CS Remote Care helps to keep output devices running smoothly, minimising interruptions and maximising system availability. All relevant system data are transmitted directly to the Konica Minolta service in an automated process that never needs user intervention.

The bizhub C650 is the ideal solution for versatile and productive printing. Its combination of black & white and colour, of quality and speed, makes it a viable alternative for any CRD and other high-volume location.

→ Configurations





KONICA MINOLTA

Simitri HD

High Definition Polymerised Toner



Technical specifications

Copier specifications

Copying process
Electrostatic laser copy
Tandem, indirect

Toner system
Simitri® HD polymerised toner

Copy/print speed A4
Colour up to 50 cpm
Mono up to 65 cpm

Copy/print speed A3
Colour up to 25 cpm
Mono up to 32 cpm

1st Copy/print time
Colour 6.0sec. (A4)
Mono 3.8 sec. (A4)

Warm-up time
Approx. 85sec.

Copy resolution
600 x 600 dpi

Gradation
256 gradations

Multi-copy
1– 9,999,
interruption mode

Original format
A5–A3

Magnification
25–400% in 0.1% steps
Autozooming

Copy functions
Chapter, cover and page insertion
Proof copy
Adjustment test print
Digital art
Job Recall
Job setting memory
Poster Mode
Overlay, Stamping, Copy Protection

Printer specifications

Print resolution
Equivalent to 1,800 x 600 dpi

Controller CPU
PowerPC MC7448 @ 867 MHz
64 BIT

Page description language
PCL 6c (PCL 5c + XL3.0)
PostScript 3

Operating systems
Windows 2000/XP/XP64
Windows VISTA 32/64
Server 2000/2003/2003 x64
Macintosh 9.x/10.x
Unix/Linux/Citrix

Print functions

Direct print of PCL, PS; TIFF, XPS, PDF and
Encrypted PDF files
Mixmedia and Mixplex
Job programming "Easy Set"
Overlay, Watermark, Copy Protection

Scanner specifications

Scan speed
Colour up to 75 opm (300 dpi via DF)
Mono up to 75 opm (300 dpi via DF)

Scan resolution
Max.: 600 x 600 dpi

Scan modes
Network TWAIN scan
Scan-to-eMail
Scan-to-FTP
Scan-to-SMB
Scan-to-Box

File formats
JPEG, TIFF, PDF, Compact PDF,
Encrypted PDF

Scan destinations
2,100 (single + group), LDAP support

Scan functions
Annotation (text/time/date) for PDF
Up to 400 job programs

Fax Specifications

Fax standard
Super G3 (optional)

Fax transmission
Analogue, i-Fax, IP-Fax, SIP-Fax

Fax resolution
Max.: 600 x 600 dpi (ultra-fine)

Fax compression
MH, MR, MMH, JBIG

Fax modem
Up to 33.6 Kbps

Fax destinations
2,100 (single + group)

Fax functions
Polling
Time shift
PC-Fax
Receipt to confidential box
Receipt to eMail, FTP, SMB

System specifications

System memory
1,024MB

System hard disc
60 GB

Interface

10-Base-T/100-Base-T/1000-Base-T
Ethernet
USB 2.0

Automatic document feeder
Up to 100 originals

Paper size
A6–A3 full bleed
Customised paper sizes

Paper weight
64–300 gsm

Paper input capacity
Standard: 3,650 sheets
Max.: 6,650 sheets

Paper output capacity
Max. 3,100 sheets

Automatic duplexing
A5–A3 full bleed
64–256 gsm

Finishing modes (optional)
Offset, Group, Sort, Staple, Punch,
Centre-fold, Letter-fold, Booklet

Copy/print volume (monthly)
Recommended: 90,000
Max.: 150,000

Power consumption
220-240 V / 50/60Hz
Less than 2.0 KW (system)

System dimensions (W x D x H, mm)
650 x 777 x 1150

System weight
Approx. 190 kg

System features

Security
ISO 15408 EAL3 (in evaluation)

Accounting
Up to 1,000 User Accounts
Active Directory support
(user name + password)
User function access definition
Biometric Authentication
(finger vein) optional
IC-Card authentication
(IC-Card reader) optional

Software
PageScope NetCare
PageScope Data Administrator
PageScope Box Operator
PageScope Workware (Trial)
Direct Print Utility
Print Status Notifier
Driver Packaging Utility

All specifications relating to paper capacity refer to A4-size paper of 80 gsm quality.

All specifications relating to scanning, copying or printing speeds refer to A4-size paper that is scanned, copied or printed crosswise in multipage, simplex mode.
Some of the product illustrations contain optional accessories.

Konica Minolta does not warrant that any prices or specifications mentioned will be error-free.

Specifications are subject to change without notice.

Microsoft, Windows and the Windows logo are trademarks, or registered trademarks, of Microsoft Corporation in the United States and/or other countries.

All other brand and product names may be registered trademarks or trademarks of their respective holders and are hereby acknowledged.

Printed in Germany on chlorine-free bleached paper.

Your Konica Minolta Business Solutions Partner:



Konica Minolta
Business Solutions Europe GmbH
Europaallee 17
30855 Langenhagen • Germany
Tel.: +49 (0) 511 74 04-0
Fax: +49 (0) 511 74 10 50
www.konicaminolta.eu